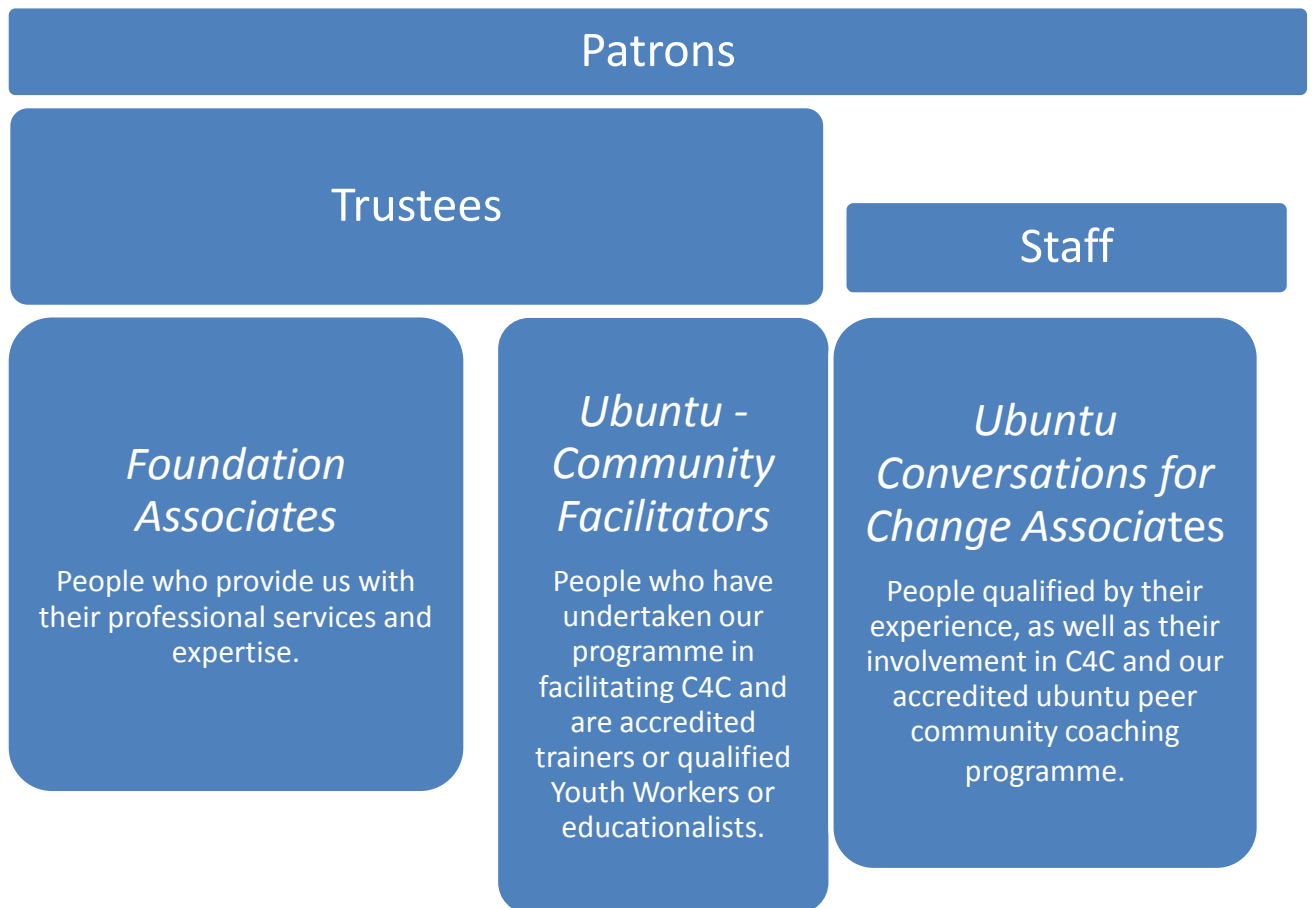


At the Tutu Foundation UK we are often asked, *‘but who helps deliver all of your activity?’*

Our work is made possible mainly through volunteer support, as well as the input of some professionals, who we describe as our Foundation Associates. At the Tutu Foundation we have a small staff team – but big aspirations and our work would not be possible without the many hours put in by people drawn from the communities we work in.



## **A warm welcome to our New Tutu Foundation Associates...**

This winter we are excited to have been joined by a new group of *Foundation Associates*, who will be joining our existing team of professional service providers and professional Conversation for Change facilitators.

We feel it is important to expand the team of people who provide us with their professional services, as well as act in an advisory capacity in relation to our day-to-day work. We are proud to work with a range of individuals who are experts in their field and they are helping us to keep our work relevant and world class. We are also committed to working with Foundation Associates who either live in, or have strong connections with the five regions that we are currently working in.

**Beau Fadahunsi:** has worked in community development and capacity building for over 15 years. Beau currently work with Merton CVS, where she supports voluntary sector organisations on: Strategic development of organisations, including drafting business plans, annual reports and annual returns; negotiating service level agreements and contracts with local statutory sector partners; identifying and completing appropriate funding applications.

Beau is an accredited *Parenting Course facilitator and a Youth Worker* and has a keen interest in informal and formal education and current her activity includes:

- Foundation Governor , Ursuline High school Wimbledon
- Vice Chair of Governors , Sutton College Of learning For Adults
- Trustee of a Mitcham Scout & Guide Group
- Trustee Sutton Opportunity Pre-school

Over the years Beau has developed and facilitated various community and school based arts and cultural projects; as well as being a foundation governor of a secondary school and an adult college, with a strong liberal arts focus.

Beau will be helping us to strengthen our work with young people and their families; Beau will also be providing us with improved intergenerational delivery across South, South West and West London, beginning with work in Sutton and Merton.

**Bill Harpe:** is the Artistic Director of the Black-E arts centre in Liverpool, he has nearly six decades expertise in promoting arts and cultural expression. Bill has worked all his life to support participatory work, as well as young people's creative expression. Bills cultural work has been wide ranging and has included: the Director of the Commonwealth Arts Festival (Cardiff); Director Opening Celebrations Metropolitan Cathedral, Liverpool; Director Anniversary of Independence Celebrations, Zambia; Deputy Group Head Arts & Recreation Policy Study Group, Greater London Council. He has directed four outdoor "Festivals of Games" in

Liverpool city centre, as well as travelling around the U.K. and to Ireland, Denmark and Jamaica to lead games and talk about games. In addition to these commitments he has written on dance and cultural issues for "The Guardian" and for magazines and periodicals in the U.K. and abroad. He also was granted a 'working sabbatical' to contribute to cultural policy and strategy at the Greater London Council. Outstanding ambitions include a desire to see the final completion of the redevelopment of the Blackie building in order to host large scale events and games, and to travel to Cuba to undertake research and to lead games.

Bill will be advising us on strengthening our work to embed Ubuntu through games. Opening our work to the young, as well as the not so young; as a means of encouraging speaking and listening skills in those who have something they want to say – i.e. all of us.

**Sylvarani Nair:** a qualified capacity builder, who hold a post graduate in Business Studies & Administration and currently leads on capacity building work with around 150 BME groups in Croydon.

Sylvarani brings many years experience of teaching foundation stage, key stage one and two level primary school children. She is experienced in planning lessons and tailoring learning activities with specific learning objectives. Sylvarani is also experienced in setting, recording and evaluating both programme and learning objectives.

Sylvarani is also qualified (City & Guilds 925, Youth Trainers Award) as a Youth Trainer and has worked extensively with young adults, including young people from disadvantaged backgrounds, who want to train in Community Service organisations. In addition she has developed and organised training, signposting and supporting coaching and mentoring for young people, to help them achieve their chosen personal and career development goals;

Sylvarani will be helping us develop our ubuntu inspired youth centred project based activity, as well deliver intergenerational capacity building work in Croydon, Surrey and Sussex.

**Maria Paul:** Is a community based artist, whose work with the Black-E arts centre, Liverpool has included a youth focus. Maria is an experienced workshop leader and her strengths include her expertise in planning preparation and delivery of arts based and issue based theatre with young people. Maria is experienced in Theatre in Education as both a performer and workshop leader.

Maria holds B.A Honours in Creative and Performing Arts, from the Deanery of Arts and Humanities Hope University Liverpool, Everton Campus and has been trained in Youth Leadership.

Maria will be helping us develop our ubuntu driven youth centred project based activity in Liverpool and advising us on improving engagement with community groups, young people and their families across the North West.

**Steve Pope:** Is the former Editor in Chief of the Voice Newspaper, the longest running and highest circulating Black British newspaper, which rose out of the ashes of the Brixton riots in the early 1980's. Steve is a co-founder of Xpress the cutting edge publishing company, which spoke for and to, a generation of Black British Youth. Steve recently took part in a panel discussion, at Theatre Royal Stratford East .on youth, arts and *A Clockwork Orange*. Steve is committed to supporting work which provides young people, of all backgrounds, an opportunity to tell their story and for their story to be heard.

Steve Pope will be working with us, to develop our sustainable work on using ubuntu to promote speaking and listening skills in young people. Steve will be working with us mainly in the East & West Midlands and East of England.

**Paul Randolph:** Course Leader and adviser on our professional Transformative Mediation programme. Paul Randolph is an Accredited Mediator (CEDR June 1999 and SPC: May 2000), and a Barrister, called in 1971. He practises from Field Court Chambers, Gray's Inn, London.

Paul is an experienced mediator, trainer and author on mediation. He is on the Board of the Civil Mediation Council and Chair of its Communications Committee; a member of the Bar Council ADR Committee, and former Chair of the National Mediation Helpline Provider's Forum. He is Adviser to the Trustees of the Lord Slynn European Law Foundation. He was External Examiner on Mediation for the Bar Vocational Course at Cardiff University Law School, and is on the Professional Standards Committee of the College of Mediators. In 1999 he devised a Mediation the course at the School of Psychotherapy and Counselling Psychology (SPCP), Regent's College, London, and since then has its Course Leader, training and accrediting mediators.

Paul has written numerous articles on mediation, and his book *Mediation - A Psychological Insight into Conflict Resolution* (Continuum 2004), co-written with the late Dr Freddie Strasser, with a Foreword by the late Lord Slynn of Hadley, was favourably reviewed in *The Times* by Sir Henry Brooke, former Vice President of the Court of Appeal, and current Chair of the Civil Mediation Council.

**Leela Solanki:** is a qualified Project Manager [Prince2], with a background in programme and resource scheduling, as well as budgeting. Leela brings unique past experience having worked in the NHS for nearly a decade, as well as social care and within an education setting, providing support for children with moderate to profound learning disabilities. Leela holds a degree in Chemistry, is interested in the teachings of Ghandi and will be supporting our work on health and tackling health inequalities.